

THE ENVIRONMENT

The environment is the natural world — a world affected by human activity. We eat animals and plants; we use water; we burn oil and gas; we create waste. Are we destroying the planet in the process?

1. ALL AROUND US

Join a word from the top row to a word in the bottom row to form seven common expressions.

- battery ● bottle ● greenhouse ● organic ● natural ● ozone ● unleaded
● banks ● farming ● gases ● hens ● layer ● petrol ● resources

_____	_____
_____	_____
_____	_____
_____	_____

2. GLOBAL PROBLEMS

Match the explanations on the left to the words on the right.

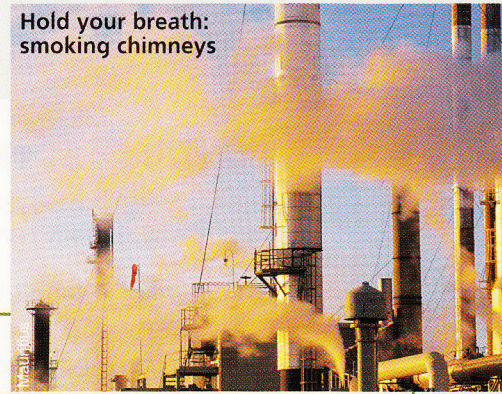
- | | |
|--|-----------------------------|
| a) Cutting down large numbers of trees | 1. carbon dioxide emissions |
| b) Too many people living in one place or region | 2. endangered species |
| c) Animals or plants that may not exist much longer | 3. deforestation |
| d) What you get when you burn coal and oil | 4. desertification |
| e) The burning of rubbish | 5. overpopulation |
| f) When fields turn to desert through intensive land use | 6. waste incineration |

3. A LOT TO DO

Choose the correct verbs.

- a) We should **increase** / **reduce** greenhouse-gas emissions.
b) We should **destroy** / **develop** the use of renewable energies.
c) We should **conserve** / **consume** the world's water resources.
d) We should **eliminate** / **promote** ozone-depleting products.
e) We should **maintain** / **protect** rhinos, giant pandas and whales.
f) We should **encourage** / **end** illegal trade in marine wildlife.

Hold your breath:
smoking chimneys



4. FINDING A SOLUTION

Which nouns are formed from these verbs?

verb	noun
a) to consume	_____
b) to conserve	_____
c) to destroy	_____
d) to develop	_____
e) to encourage	_____
f) to improve	_____
g) to increase	_____
h) to maintain	_____
i) to protect	_____
j) to provide	_____

5. THE WORLD WE LIVE IN

Use the adjectives below to complete the text.

- clean ● domestic ● effective
● scarce ● widespread

Due to mismanagement, water has become a

- a) _____ resource. There are many factors that affect the b) _____ provision of c) _____ water. Pollution by the industrial and d) _____ sectors is massive, and population growth has led to e) _____ deforestation and the desertification of farmland.